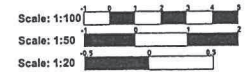


Do not scale from this drawing

All areas are approximate

Area Schedule (GIA)		
Name	Level	Approx. Area
Unit 1	00 - Ground Floor	110.0 m ²
Unit 2	00 - Ground Floor	82.9 m ²
Unit 3	00 - Ground Floor	50.5 m ²
Unit 4	01 - First Floor	83.1 m ²
Unit 5	01 - First Floor	84.0 m ²
Unit 6	01 - First Floor	57.4 m ²
Unit 7	02 - Second Floor	68.4 m ²
Unit 8	02 - Second Floor	77.4 m ²
Unit 9	02 - Second Floor	49.5 m ²
Grand total:	9	663.2 m ²

Area Schedule (Gross Building)	
Name	Approx. Area
Second Floor	244 m ²
First Floor	273 m ²
Ground Floor	309 m ²
Grand total:	826 m ²



Revision A

- Ground Floor plan amended
- Bicycle stands removed from Access Road sides and moved to Courtyard area - canopy added.
- Bin Store removed along Access Road and moved to Courtyard area.

PLANNING

Rev	Description	Date	Drawn	Checked
A	See Note Above	12/11/07	ECM	IF

Client: Harepath LLP LONDON BOROUGH OF MERTON

Project: Bell House Elm Grove Wimbledon SW19 4HE 14 NOV 2007

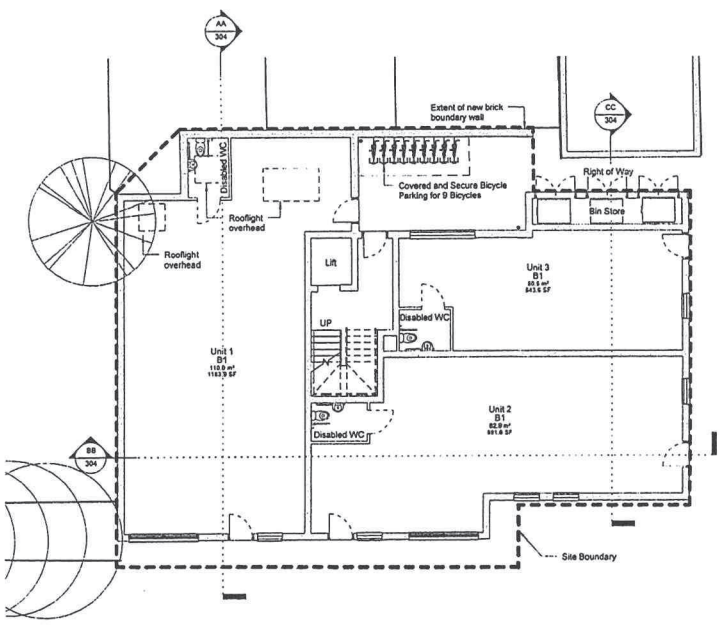
Drawing: Floor Plans

Scale	Date	Drawn	Checked
1:100 @ A1	20/08/07	ECM	IF

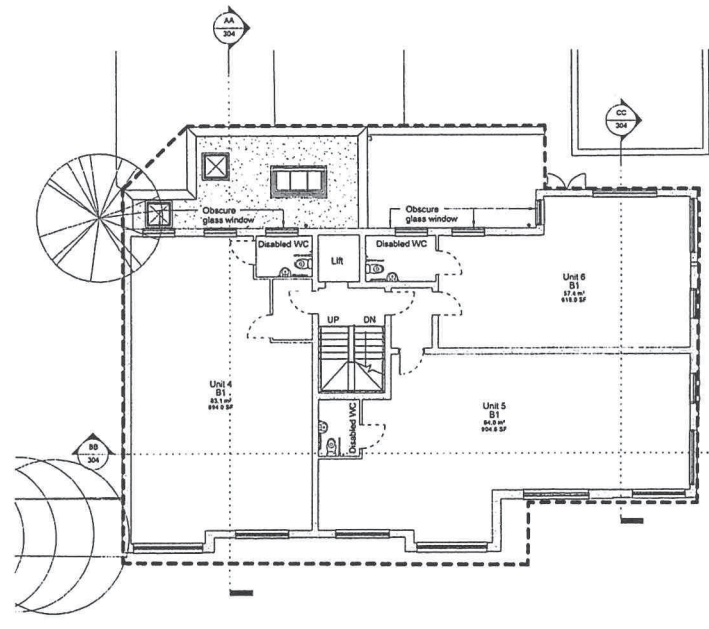
PAUL BROOKES ARCHITECTS
The Works 28 Barnes Avenue London SW13 9AB
T 020 8563 0181
F 020 8563 0763
E pb@pbaworks.co.uk

Drawing No.	2863	D	[301	A
-------------	------	---	---	-----	---

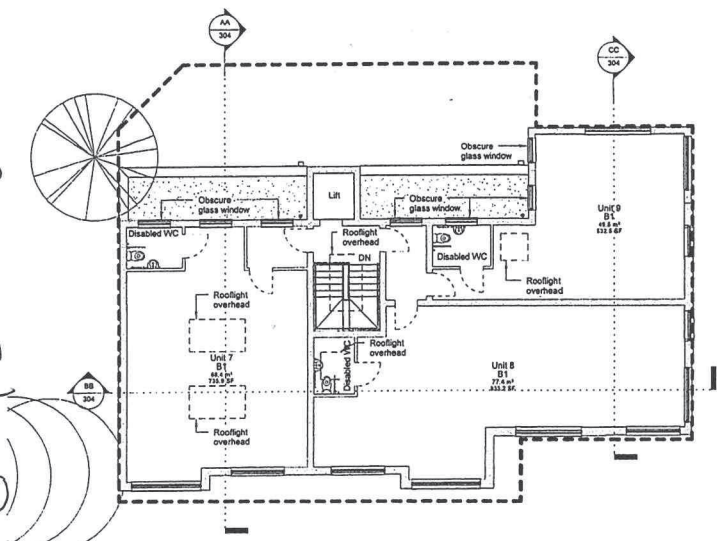
02/P3S1 Page 109 moved PAC July 2008



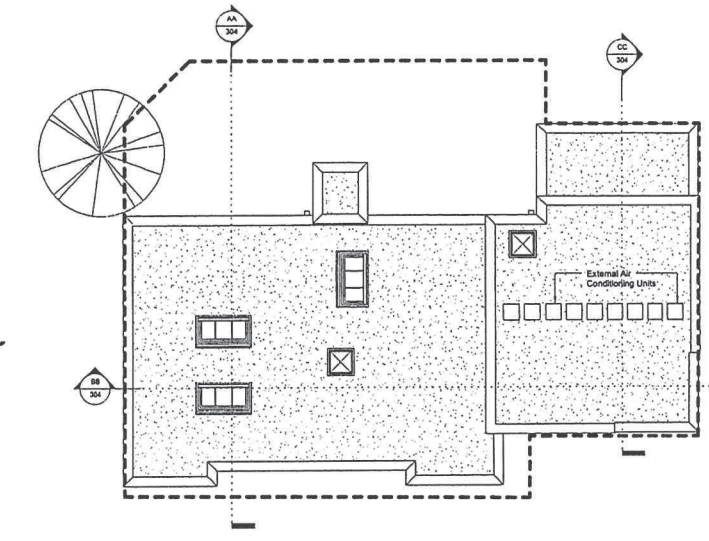
1 00 - Ground Floor
1:100



2 01 - First Floor
1:100



3 02 - Second Floor
1:100



4 03 - Roof Plan
1:100